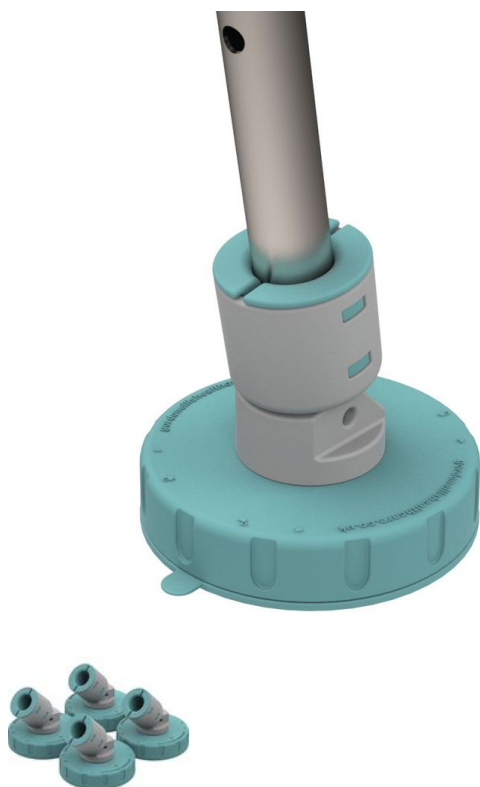


PRIMA SUCTION CUP LEGS



- 815218

- **Easily secures all seating to the floor**

These suction cup legs are used to secure the legs of chairs, toilet frames or other products with legs. Simply choose the joint in each of the legs for a diameter of 19 mm, 22 mm or 25 mm. After installation, you simply rotate the base by a quarter turn to secure. The legs allow for an angle of 95° on one side and 45° on the other, limiting dislodging with small movements.

To be fixed on a flat and smooth surface such as tiles. Set of 4. 8.5 cm diameter.

Date d'impression : 18/05/2024