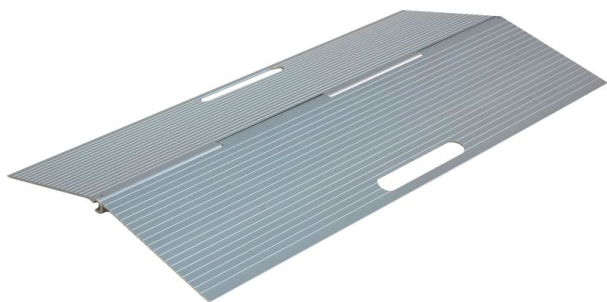


## Small threshold ramp



- 826174

- **With carrying handles**

A small, practical ramp for crossing thresholds of sliding doors or PVC doors. Non-slip ribbed aluminum.

Maximum obstacle height : 4 cm  
Dimensions : width 76 x depth 40 cm.

Maximum weight supported : 300 kg

Model with handles included